

Safespace Portsmouth (10 years on)

Rob Anderson-Weaver PHP

Wessex Public Health Conference

March 25th 2020



Portsmouth
CITY COUNCIL

Future of 'Safe Space' for city drinkers secured



Guildhall Walk, Portsmouth

Published: 08:00
Thursday 24 March 2011

Share this article





NHS
South Central
Ambulance Service
NHS Foundation Trust

SAFE SPACE



Open Late! www.scas.nhs.uk

Designed & printed
by UK Flyers
www.ukflyers.com



Health promotion and Opportunistic Interventions

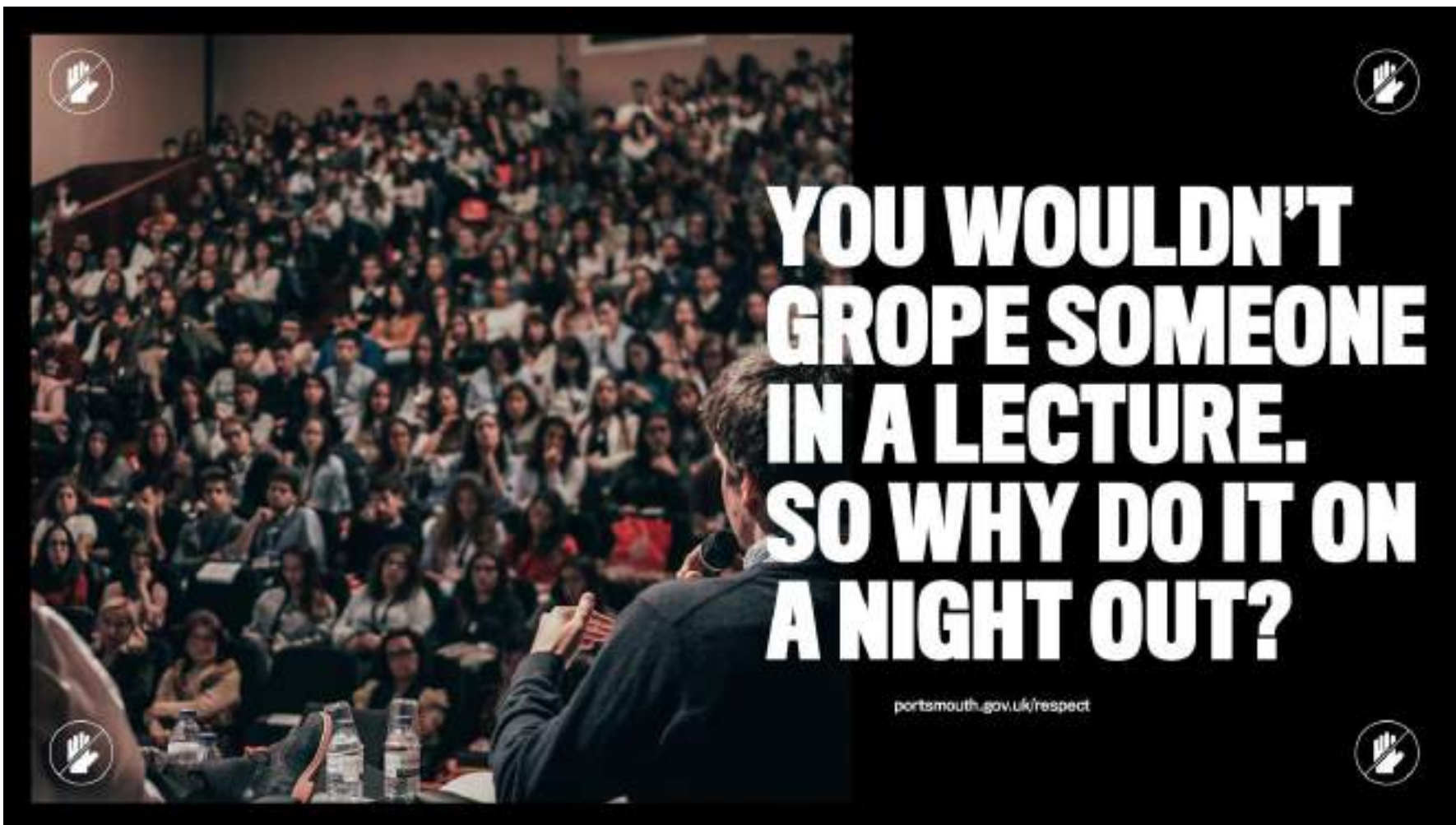
Using Safespace as a base for engagement with partners and NTE members to:

- ▶ Upskill the wider workforce
- ▶ Improve health literacy
- ▶ Reduce vulnerability
- ▶ Improve access to healthcare
- ▶ Reduce unnecessary demand on other services

Partners engaged in 'health promotion'







**YOU WOULDN'T
GROPE SOMEONE
IN A LECTURE.
SO WHY DO IT ON
A NIGHT OUT?**

portsmouth.gov.uk/respect

How much is too much?

- Venues in the Guildhall Walk are participating in a research project on levels of alcohol consumption, using Breathalysers.
- You may be asked for your consent to be breathalysed either randomly, or as a condition of entry to this venue.
- Venues reserve the rights to decide who enters their premises and this decision is final.
- **We thank you in advance for your time and cooperation.**



A YEAR IN PORTSMOUTH STREET PASTORS



Helping vulnerable people

601



Contacts made: verbal

2956



Faith conversations and request for prayers

122



Contacts made: non verbal

500



Bottles and cans cleaned up

6687



Pairs of flip flops given out

287



Trained volunteer hours

2724

YOUR HEALTH SERVICES

ASK A PHARMACIST



Expert advice on:

- Medicines and prescriptions
- Bugs and viruses: nasty coughs, colds and flu
- Aches and pains
- Skin conditions and allergies

CALL NHS 111



Call 111 if you:

- Think you need to go to A&E or another NHS urgent care service
- Don't know who to call for medical help
- Need information about a health issue

GO TO ST MARY'S TREATMENT CENTRE



- Sprains and strains
- Broken bones
- Wound infections
- Minor burns/scalds
- Bites and stings
- Minor head injuries
- Minor eye injuries
- Injuries to the back, shoulder or chest

CONTACT YOUR GP SURGERY



- Prescriptions for medicines
- Advice on physical/mental health problems, treatment of ongoing illnesses or conditions
- Illnesses that don't go away with self care - e.g. ongoing cough or stomach pain

A&E OR 999



- Loss of consciousness
- Persistent, severe chest pain
- Breathing difficulties/not breathing at all
- Severe bleeding that cannot be stopped
- Suspected heart attack or stroke
- Severe allergic reaction

SAFE SPACE

(Friday & Saturday 10pm - 3am.
Culldhall Walk Practice. Run by
South Central Ambulance Service)

- Minor injuries
- Aches and pains
- Illness caused by alcohol/drugs
- Sexual health concerns (can provide condoms and pregnancy tests)
- Worried about your personal safety/need help finding your friends

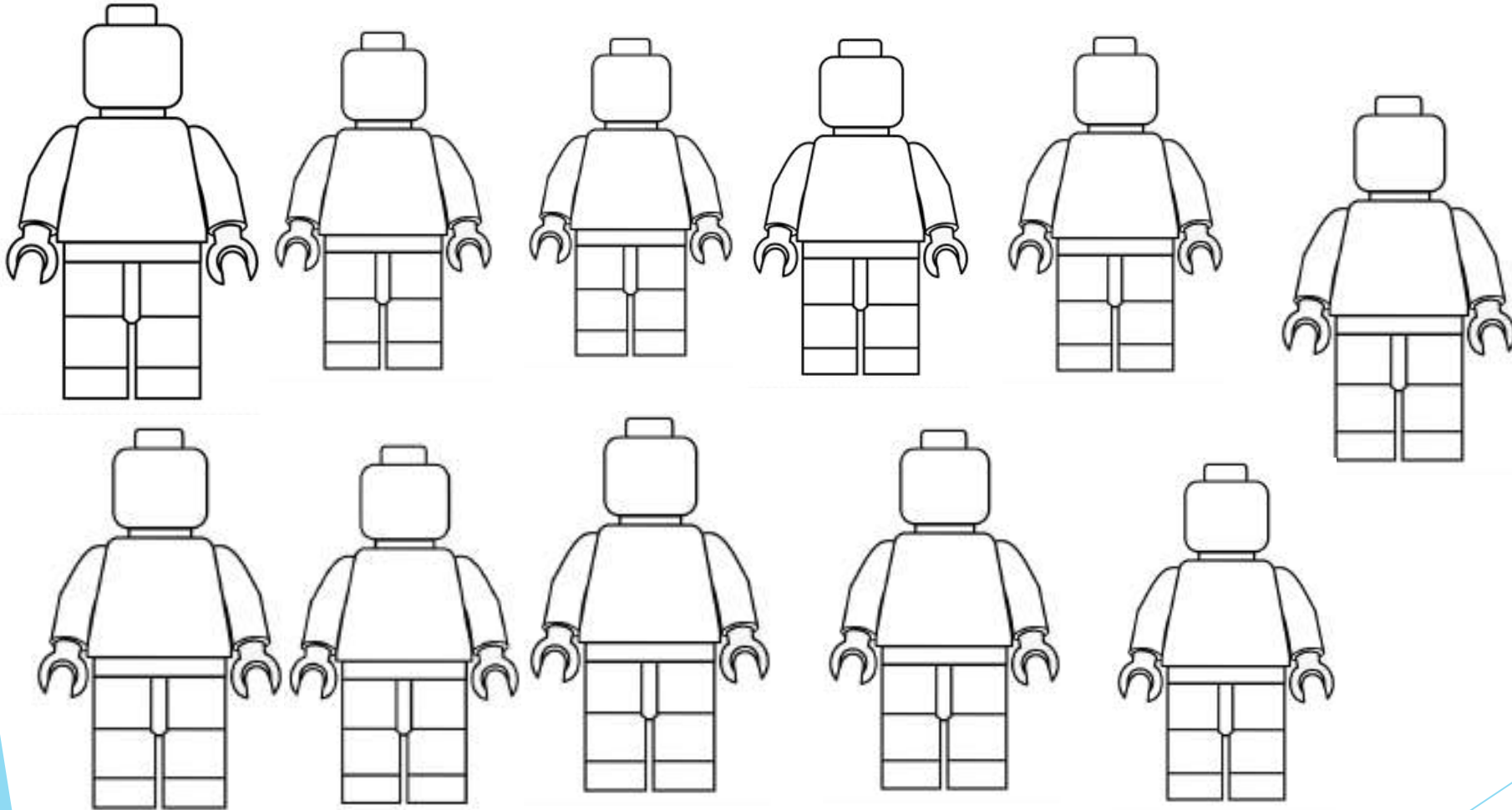
Campaign work on improving health literacy and the use of appropriate services



Complaints amongst Portsmouth's Safe Space attendants which arose more than 10 times, 2015/16 to 2018/19 pooled

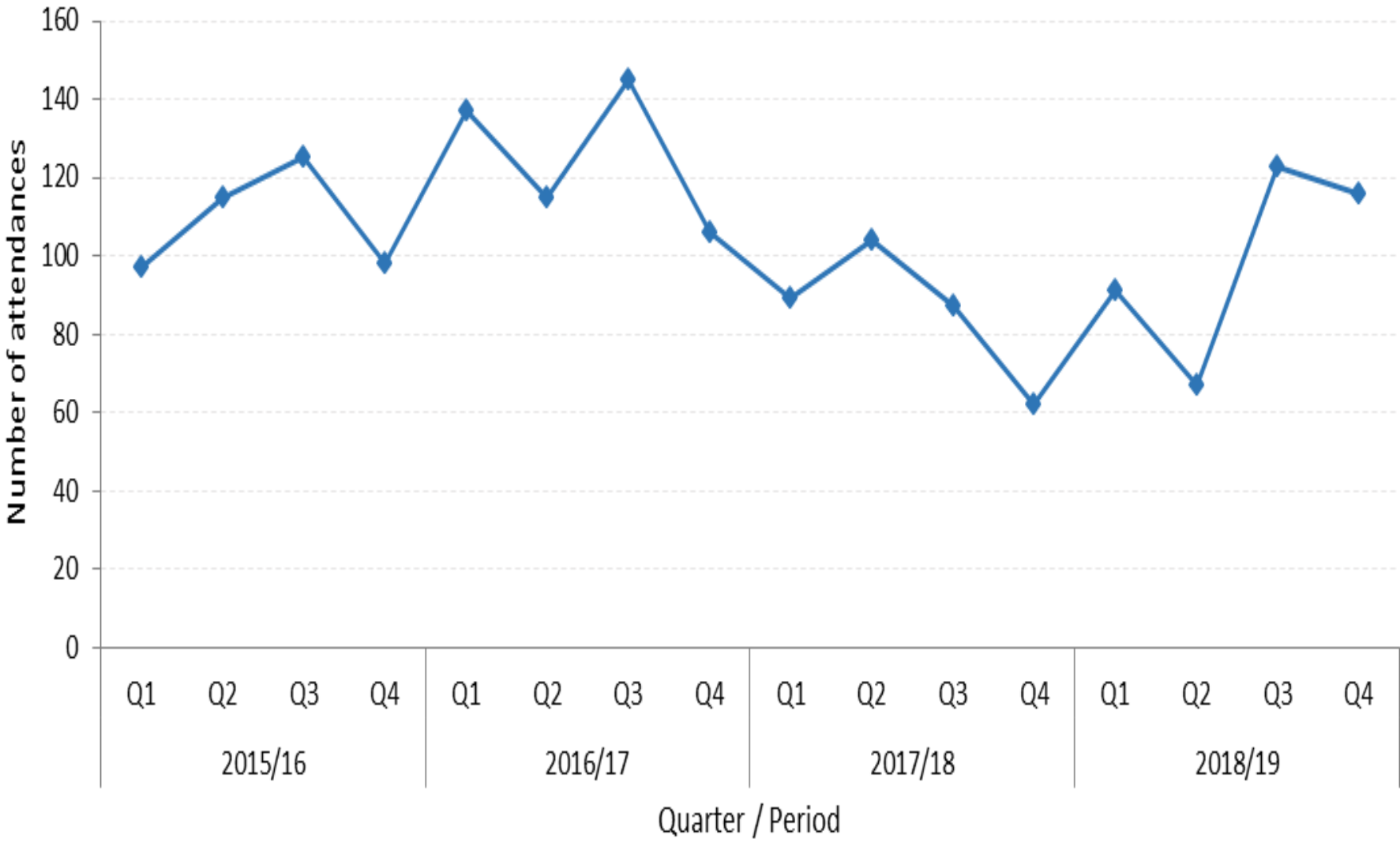


Urgent care



Presentations to Safespace for 'seizures' or 'fits'

Number of attendances at Portsmouth's Safe Space by quarter, 2015/16 to 2018/19



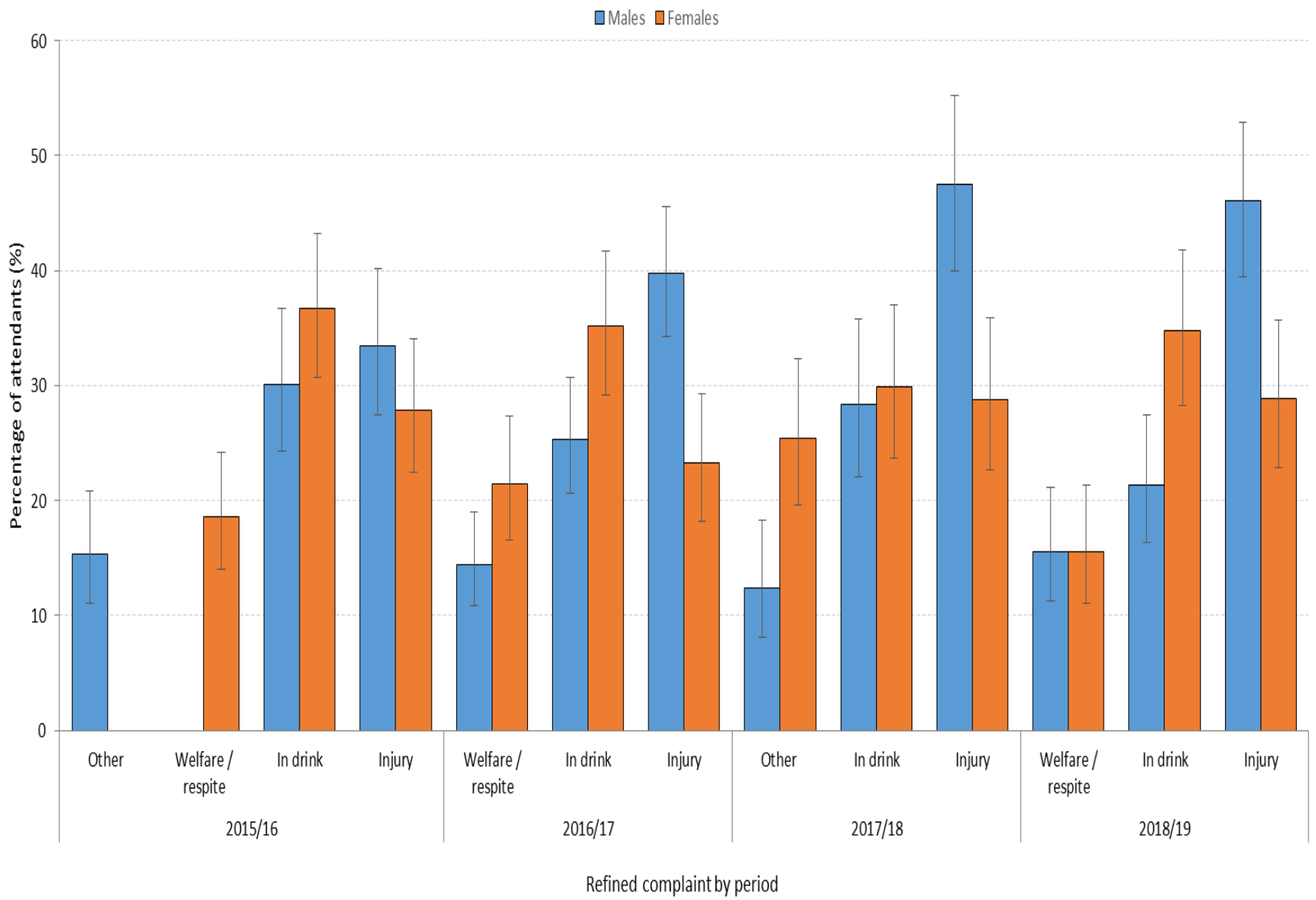
Source: Portsmouth's Safe Space data, 2015/16 to 2018/19 2018/2019.

Number of saved 999 calls and A&E attendances avoided combined at Portsmouth's Safe Space by quarter, 2015/16 to 2018/19



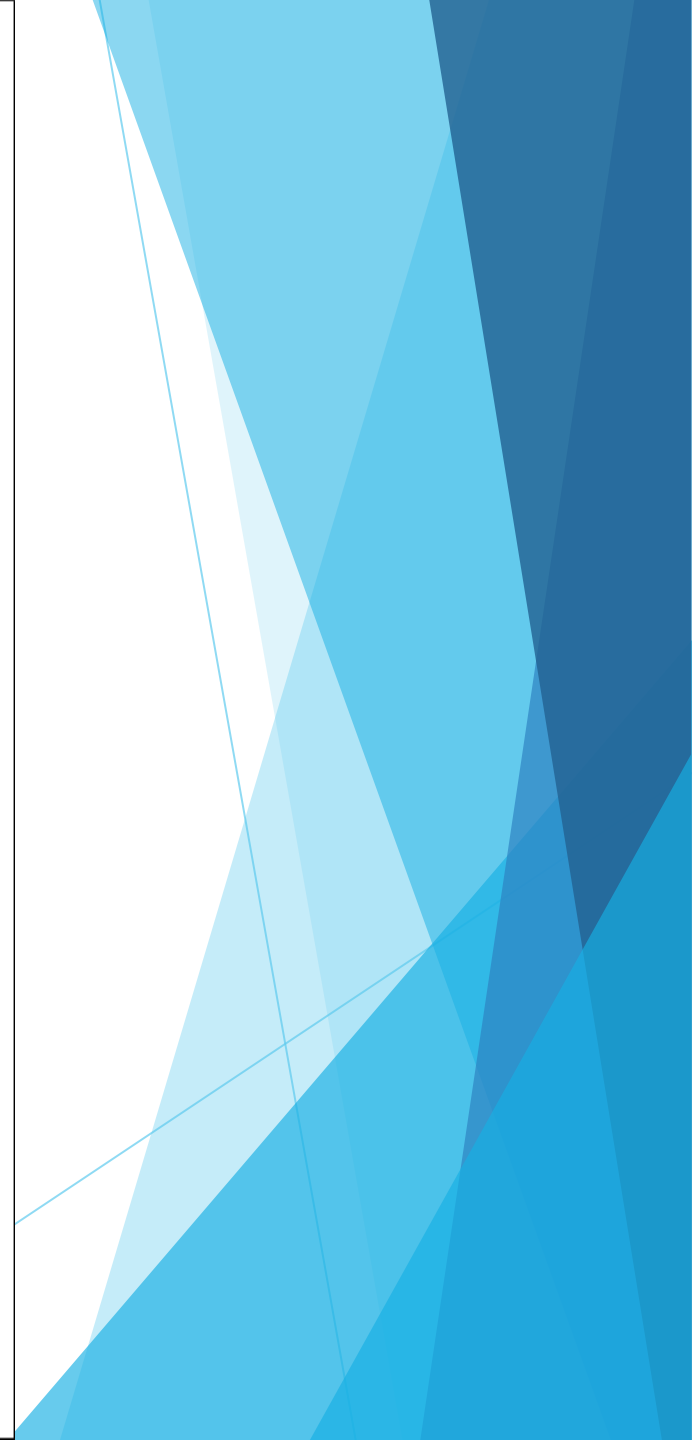
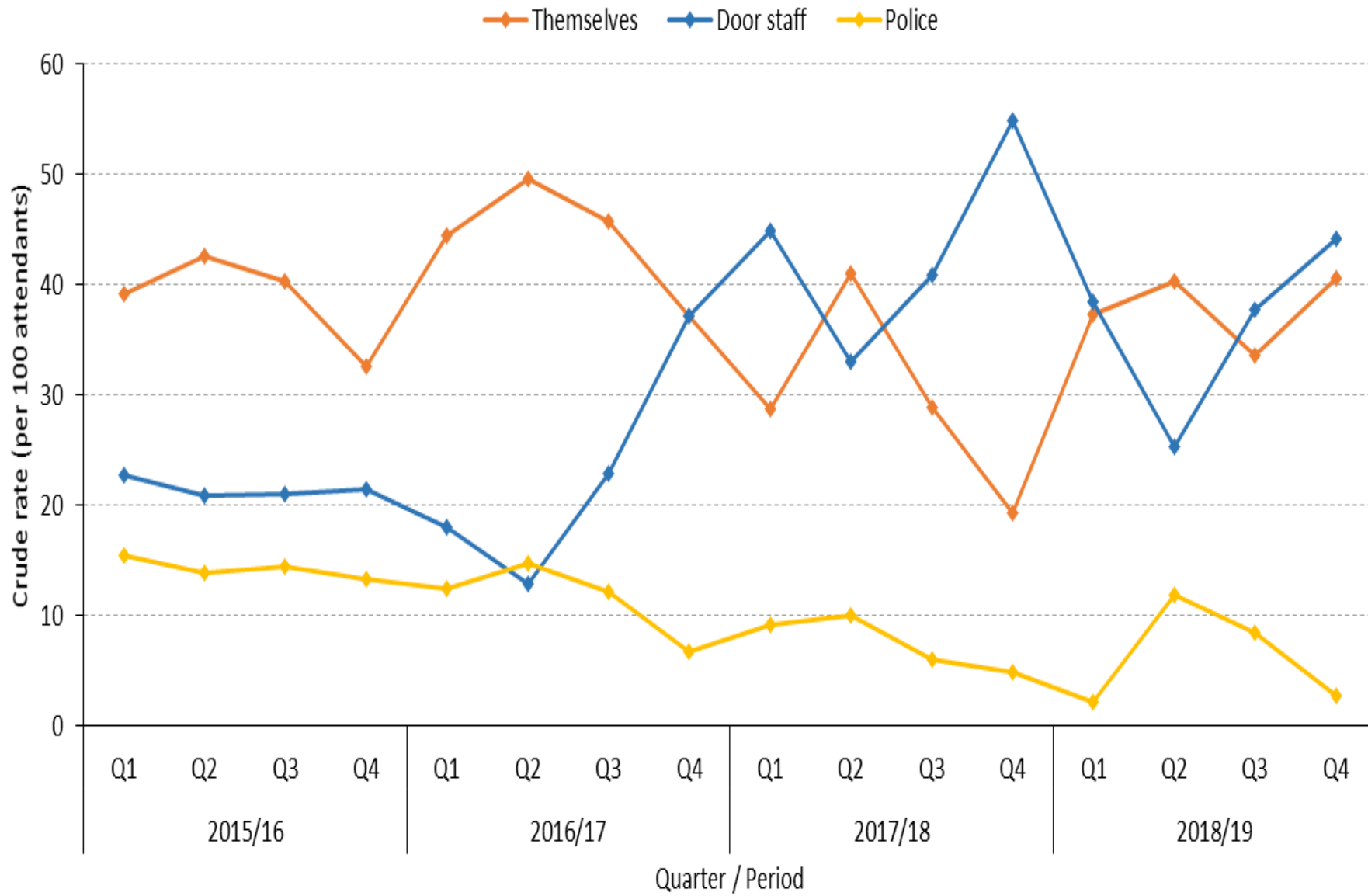
Source: Portsmouth's Safe Space data, 2015/16 to 2018/2019.

Top three refined complaints amongst Portsmouth's Safe Space attendants by sex, 2015/16 to 2018/19



Source: Portsmouth's Safe Space data, 2015/16 to 2018/19

Number of attendants (per 100 attendants at Portsmouth's Safe Space) referred by the top three referrer types by quarter, 2015/16 to 2018/19



Source: Portsmouth's Safe Space data, 2015/16 to 2018/2019.

Next Steps

- ▶ Visit other AIMS
- ▶ Closer working with partners
- ▶ Out reach
- ▶ Develop the wider work force
- ▶ Be opportunistic
- ▶ *Thank you for listening*

